



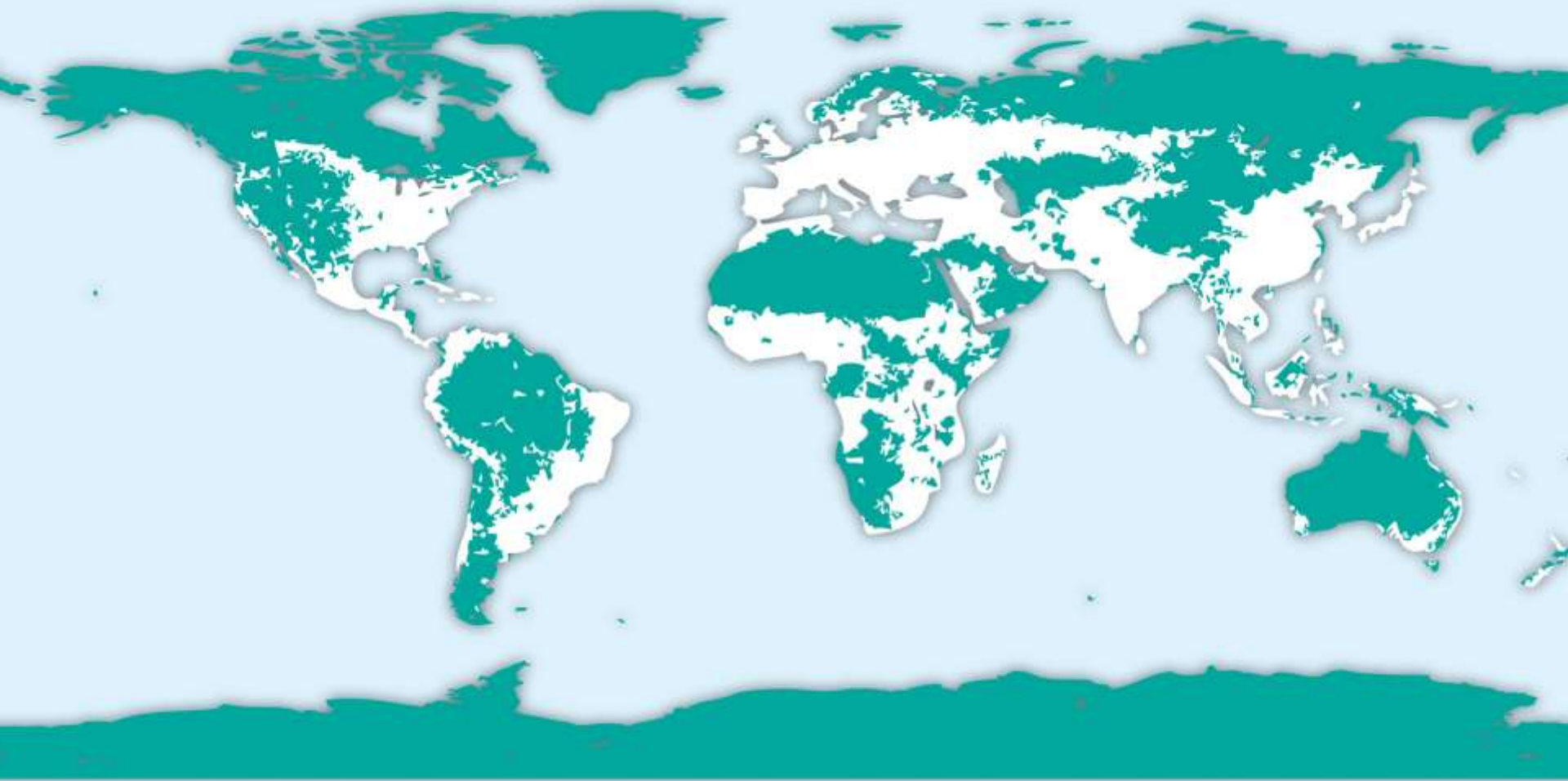
Wilderness, Tourism and National Parks

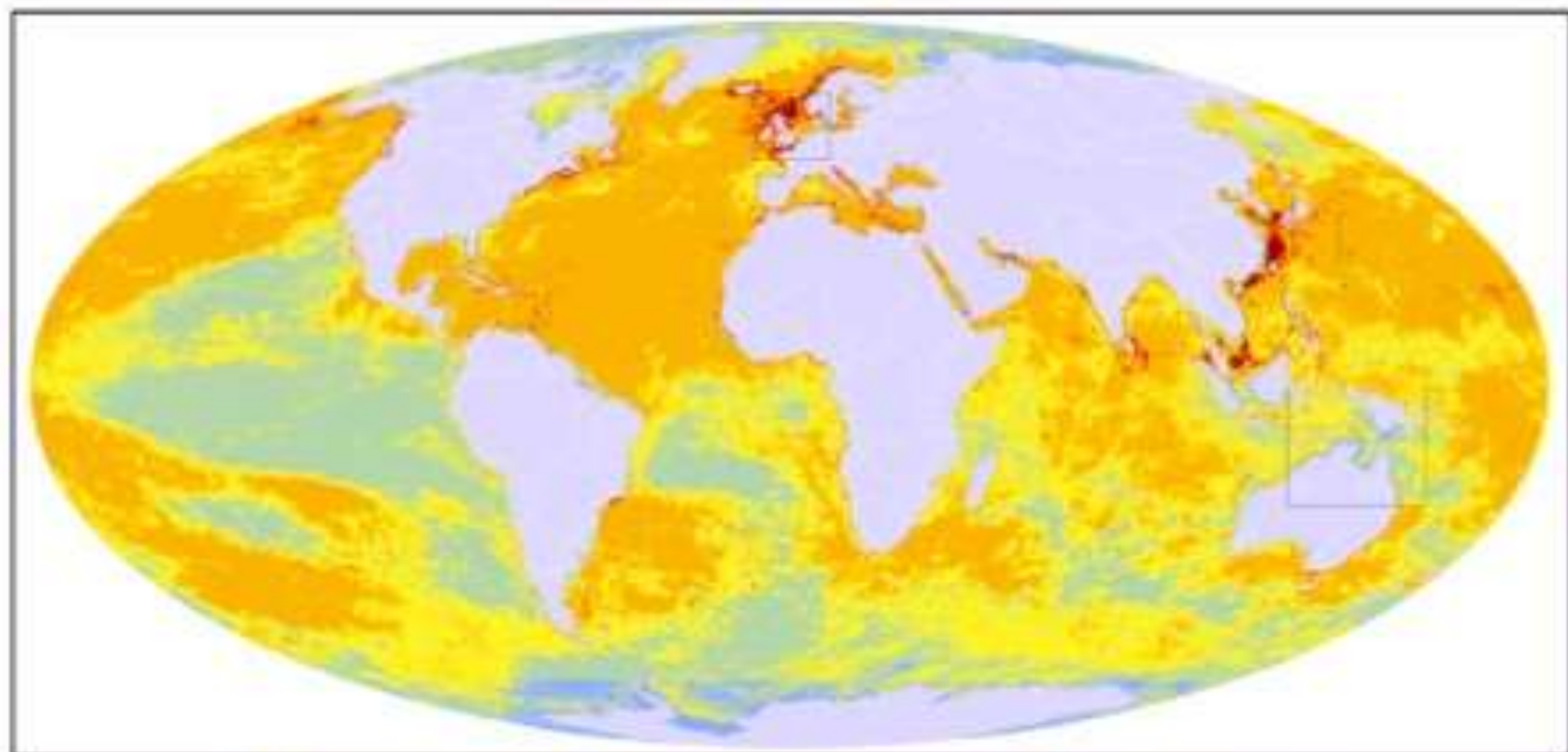
The North

*Field Report: regional futures for
wilderness & protected areas*

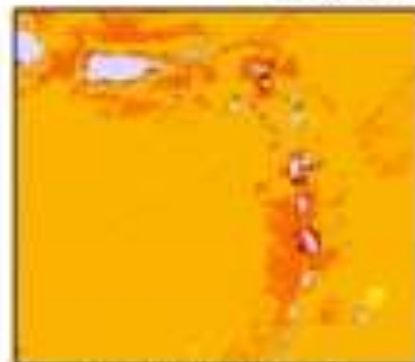
6th National Wilderness Conference

Sydney

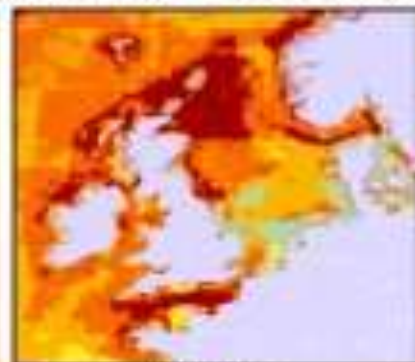




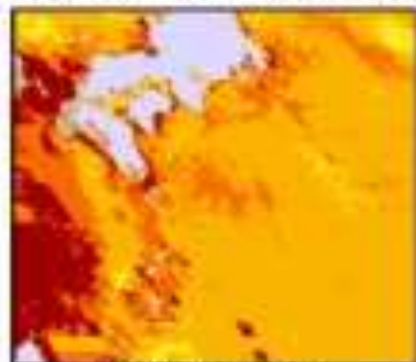
Very Low Impact (<1.4) Medium Impact (4.95-8.47) High Impact (12-15.52)
Low Impact (1.4-4.95) Medium High Impact (8.47-12) Very High Impact (>15.52)



Eastern Caribbean



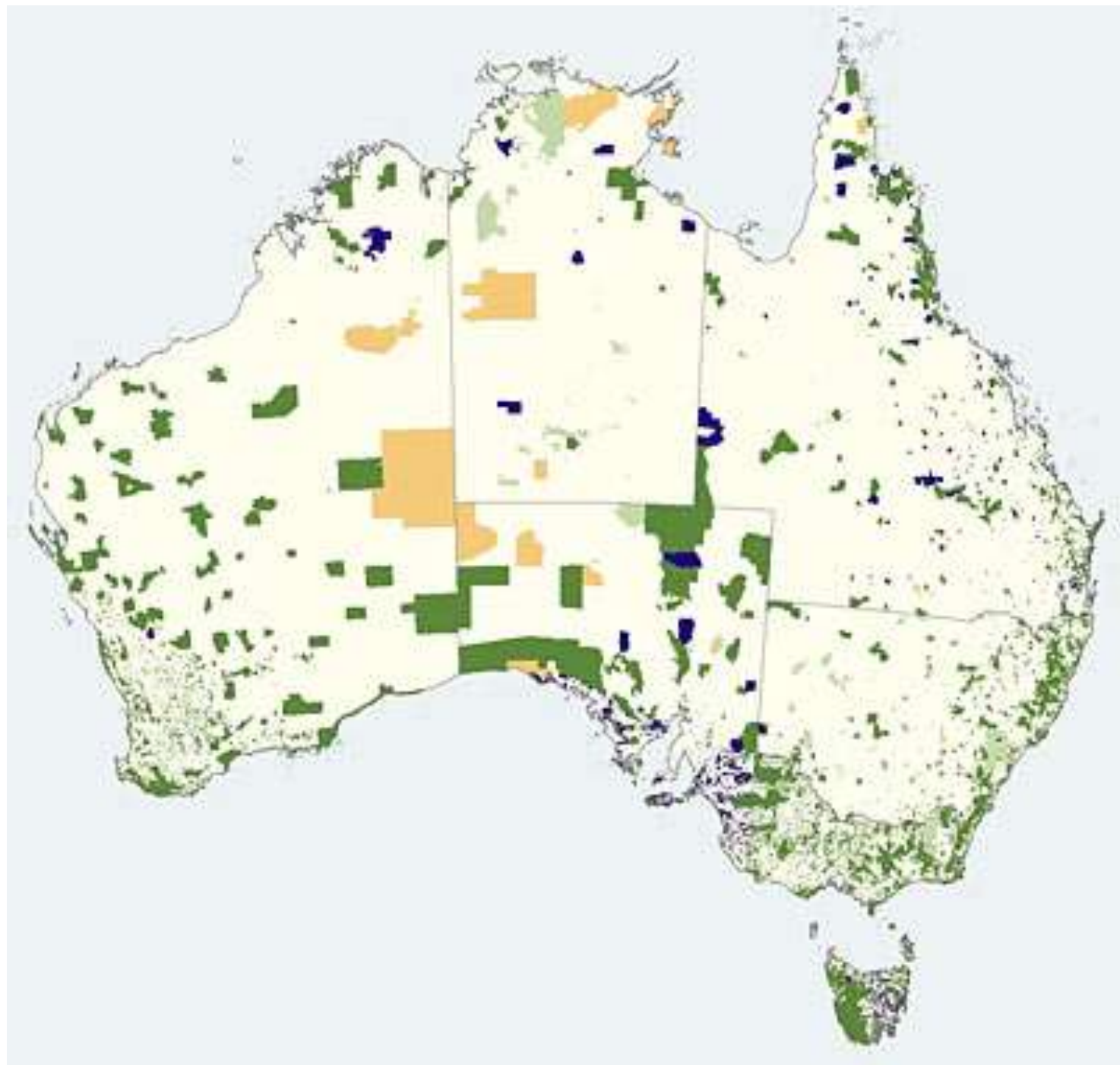
North Sea



Japanese Waters



Torres Strait



The Conservative Hegemony

The rise of conservative, anti-conservation politics is a serious threat to existing reserves and remaining wild areas.

- The Liberal-National Party landslide victory in Queensland
- The Country Liberal Party in the Northern Territory
- The Liberal Party Government in WA (with National Party support)
- The prospect of a federal Coalition Government
- The Labor push back in certain places...

The Big Threats to Nature in the North

The North faces an extraordinary array of environmental threats:

- The biggest mining and energy boom in history, with a major focus in Australia
- The legitimate concerns of the Indigenous community about their economic future
- Diffuse threats – grazing, fire, weeds, ferals...
- Climate Change impacts
- The scaling back of Government support and capacity
- The so-called “Northern Food-bowl”

What role can protected areas and tourism play in this context?



CAPE YORK

P E N I N S U L A

WORLD HERITAGE PROTECTION FOR WORLD-CLASS COUNTRY



Tourism: a part of the solution?

- **World Heritage provides the foundation for a conservation economy on Cape York Peninsula**
- **Establishment of a World Heritage Centre and tourism hubs**
- **Overhaul pastoral lease conditions**
- **World Heritage Area management**
- **Carbon Farming Initiative & Indigenous Carbon farming Fund**
- **Development of the 'Dreaming Track'**
- **Investment in the Indigenous Conservation Estate**
- **Improved health & education services in communities**
- **Biomedical, bio prospecting & pharmaceutical enterprises**



Mining threats

